

# Eastman Fine Art Studio

**Donna Eastman Liddle**

Local Studio: 405 N Grant Ave., Norton, KS 67654

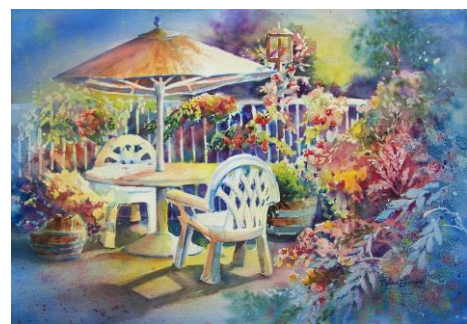
Studios in Arizona and Kansas

Cell: **480.369.0669**

[donna@eastmanfineartstudio.com](mailto:donna@eastmanfineartstudio.com) [www.EastmanFineArtStudio.com](http://www.EastmanFineArtStudio.com)

**Biography** *"Communities grow where Culture and the Arts are strong"*. Donna began painting in 1996, taking classes weekly for 4 years with Brumley Gallery Owner, Joan Brumley, at Bass Lake, CA. She assisted owner, Joan Brumley, in over the course of the next 7 years, encouraging artistic development to students of all ages. She began engaging in grant writing during her tenure with the artist co-operative Timberline Gallery in Oakhurst, CA near Yosemite National Park. She regularly participates in Professional Art Workshops from internationally renowned artists recognizing that the journey to productive work includes a wide perspective to the creative process. As a result, she has been accepted in many juried exhibitions and critique groups. She served on the Executive Board for the Arizona Watercolor Association (AWA), Arizona Alliance for the Arts (AAA) (a statewide alliance), and the Flagstaff Arts Council. Donna is a juried and award-winning member of the AWA and AAA, where she also wrote grants for their education projects. Donna maintains an active membership with AWA, AAA, Norton County Arts Council, and most recently with the Main Street Arts Council in Hoxie, KS. Art has always played a major role in Donna's personal and professional development. She has been a Chamber of Commerce professional for 15 years, serving as a CEO for 11 years. She focuses on Tourism and Community Development and writing grants for Main Street re-development and for the promotion of the Arts.

## Artist Statement



"I believe that the gift of art heals the spirit, and will, in some small way, inspire yours." I began art classes as a means of re-directing my emotions. The transforming power within this creative process allows the release of creative energy that has a healing effect. I love the way visual art can speak without words and be influential and motivating. I am intrigued with Watercolor because of its free-flowing nature. My work is upbeat, colorful, and expressive. My inspiration comes from all things vintage, nature, and water, reflecting everyday moments or destinations that impact thoughtful images. My technical influences are Winslow Homer and Edgar Whitney. My creative influences are Tony Couch and Marilyn Simandle. The arts are a vital thread in the fabric of our nature. I am thrilled to be a participant.

*Donna Eastman Liddle*